

# Smart Division



*Sistema de división de espacios interiores de aspecto minimalista, ideal para lograr ambientes especiales, evitando tabiques clásicos, para el máximo aprovechamiento de la luz natural del exterior.*

*Infinitas opciones de acabado, con gama de perfiles lacado, anodizados y lacado madera.*

*Posibilidad de hacer fijos, abatibles y correderas de líneas rectas en múltiples combinaciones con la mayor elegancia.*

*Calidad en detalles fundamentales*



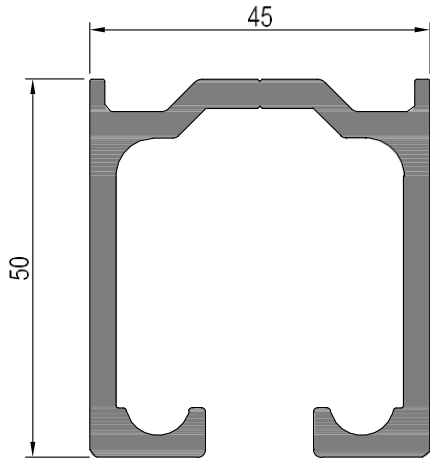
## ÍNDICE

PERFILES

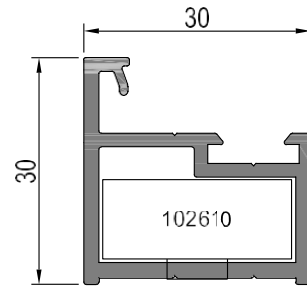
ACCESORIOS

SECCIONES

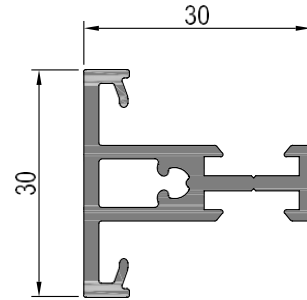
HOJAS DE CORTE



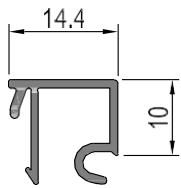
1S1200



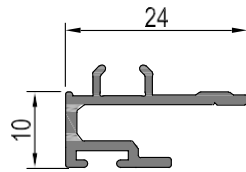
1S1250



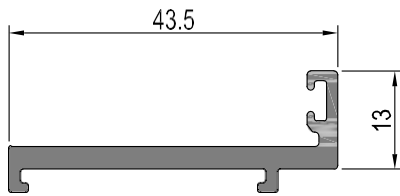
1S1300



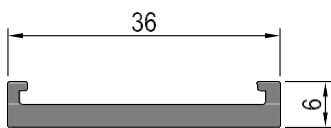
1S1255



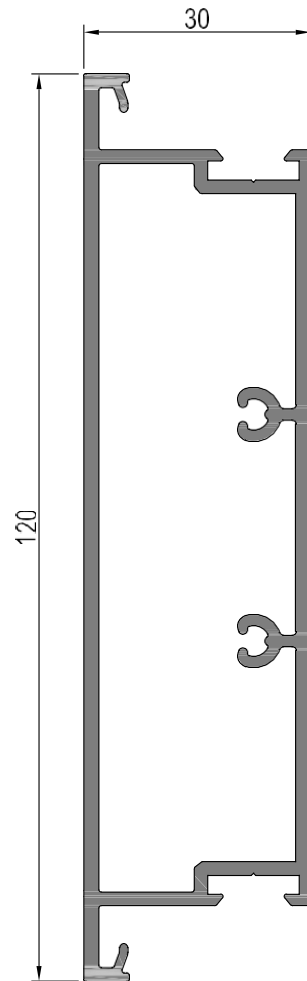
1S1315



1S1350



1S1360



1S1310

aluminio

## Accesorios y escuadras

**1026100**



Escuadra 26 x 10

**TRM0001**



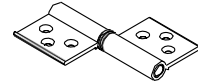
Troquel manual

**SUP0001**



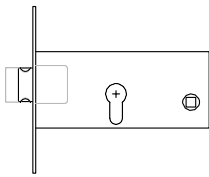
Suplemento troquel

**0120039**



Bisagra división

**0120038**



Cerradura 1 pto

**0120040**



Manilla redonda

**0120041**



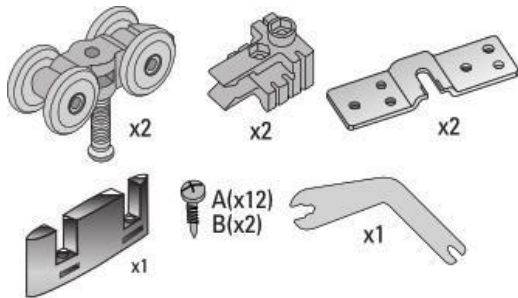
Cilindro 30-30 3 llaves

**0304004**



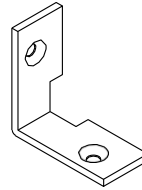
Junta burbuja

**0120042**



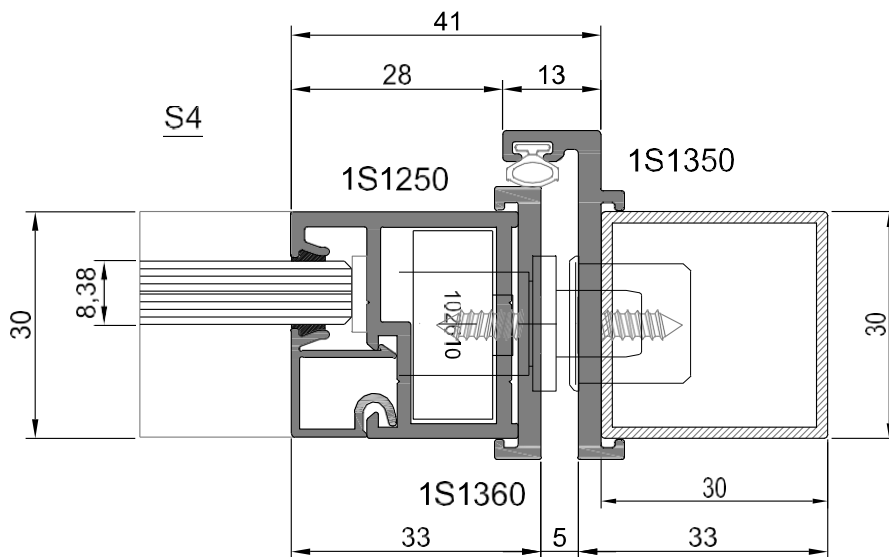
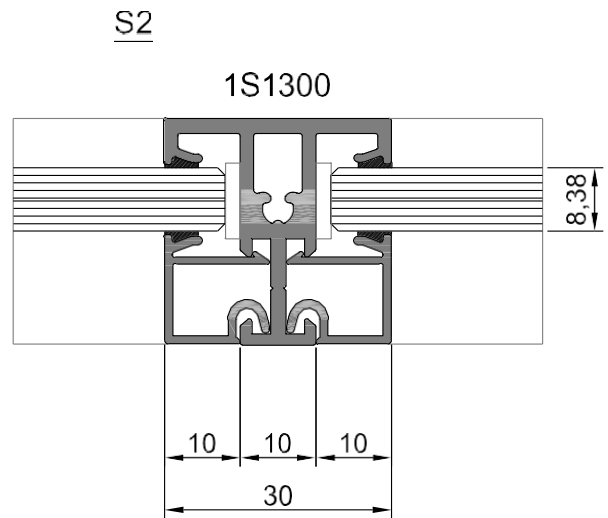
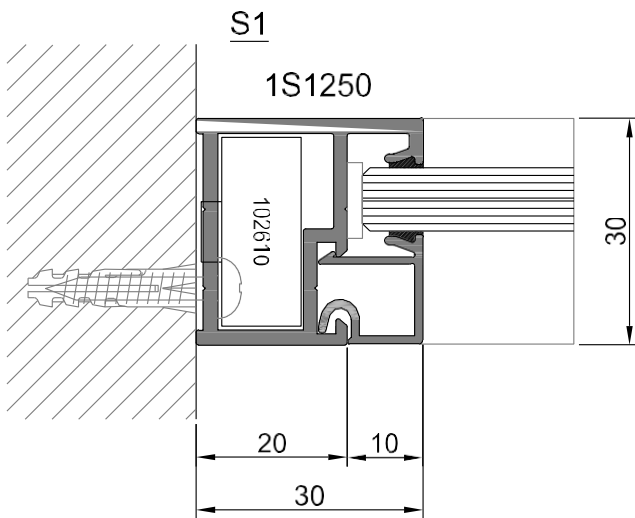
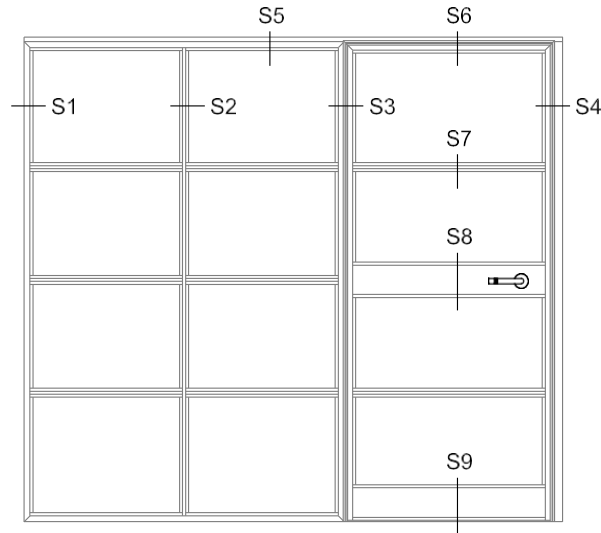
Conjunto corredera 1 hoja 150 kg

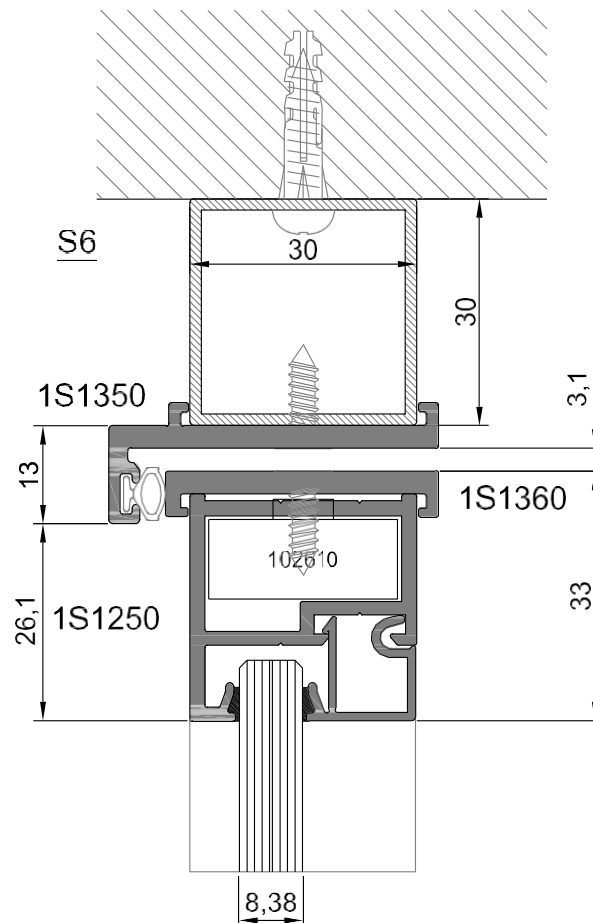
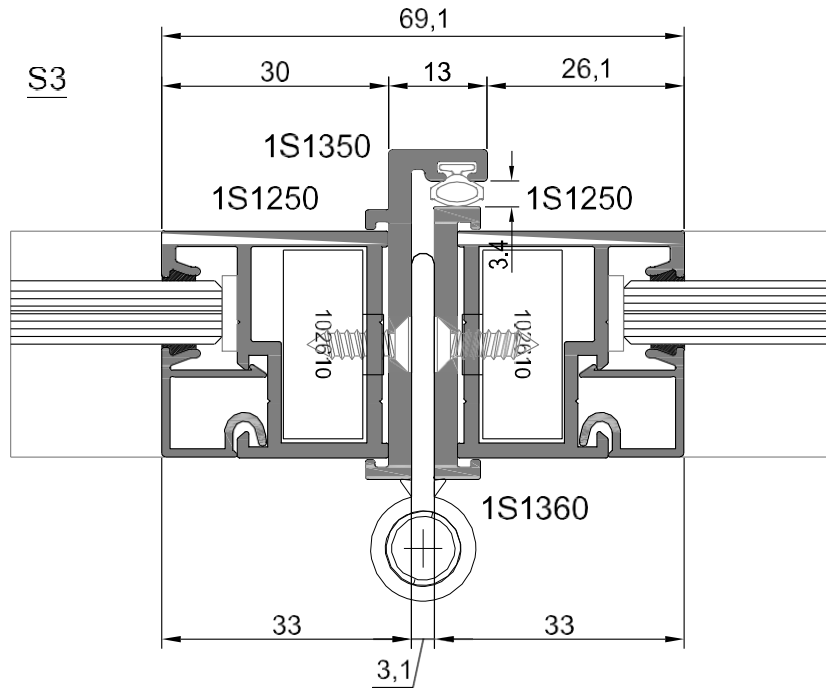
**0120039**

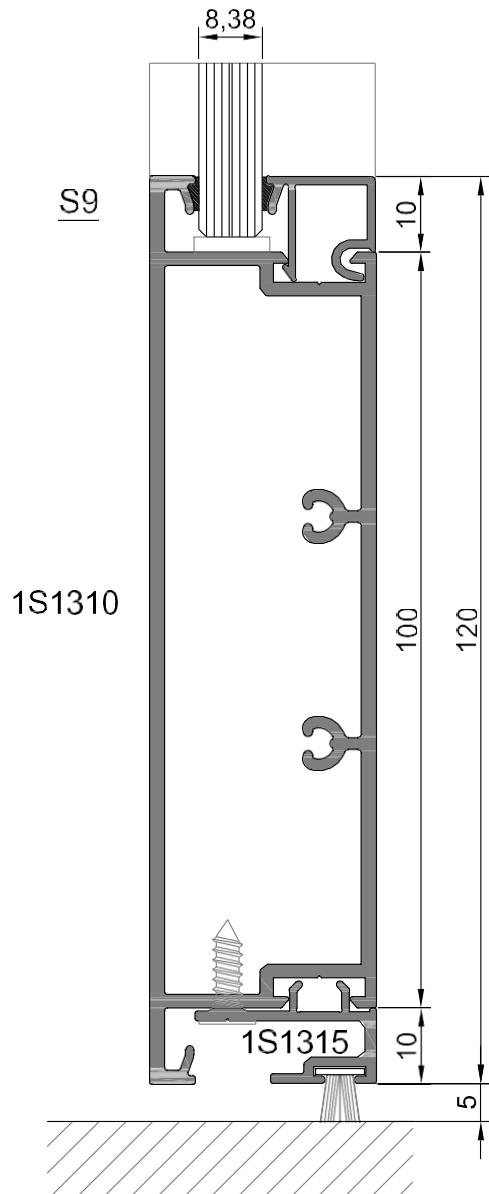
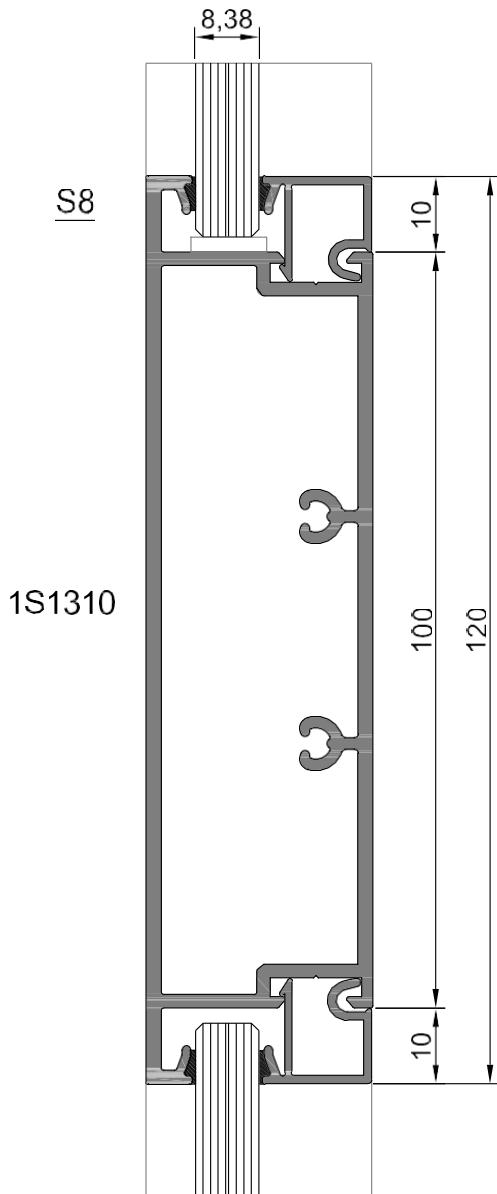
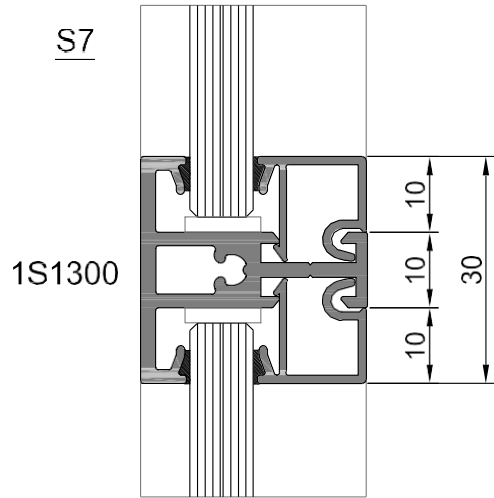
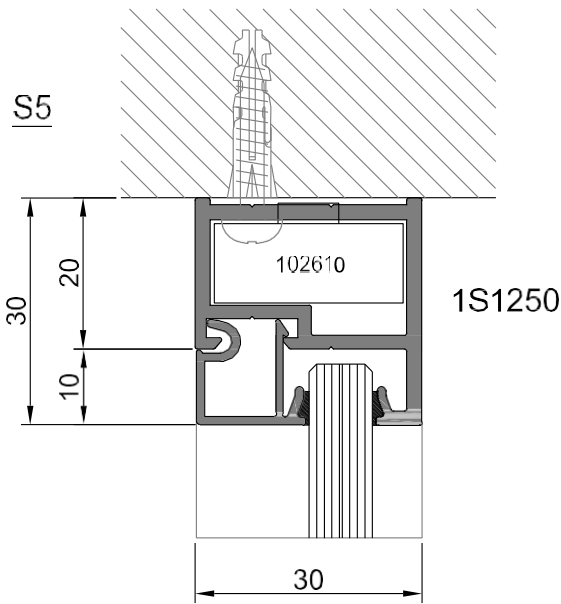


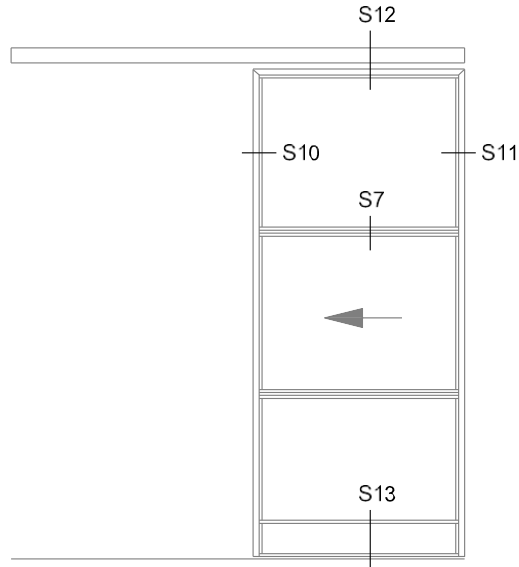
Unión de travesaño

Felpa 6,5x10

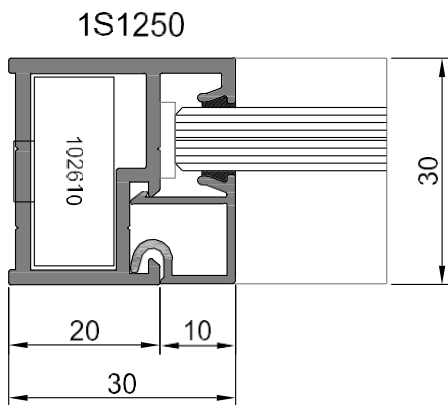




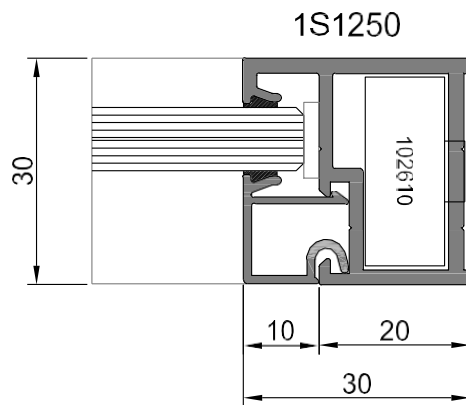




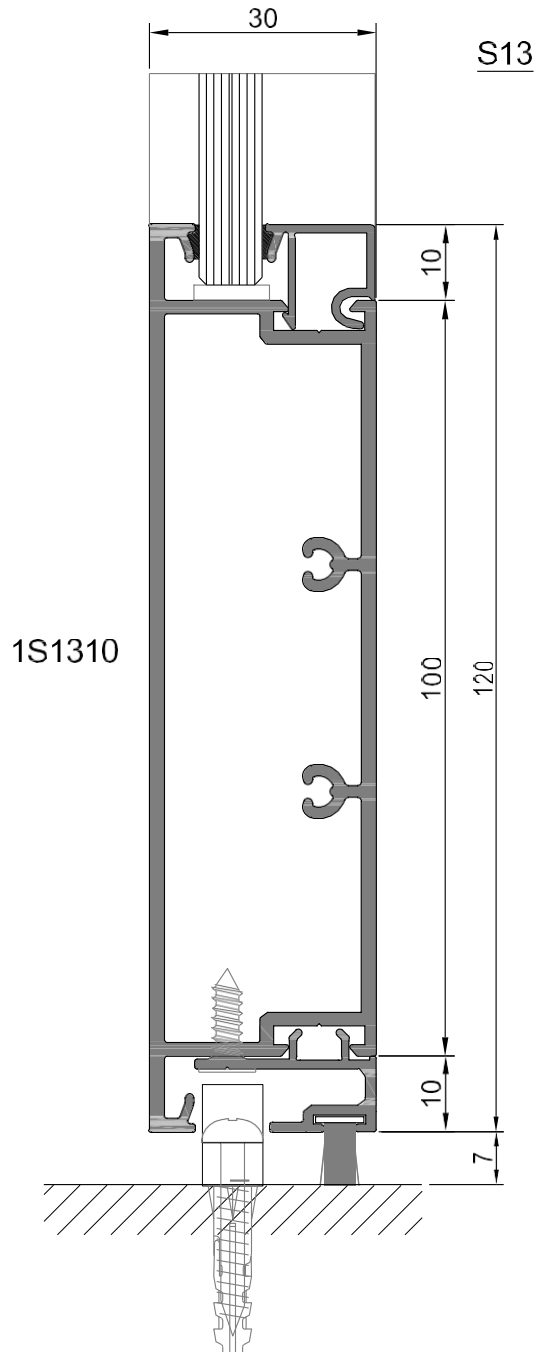
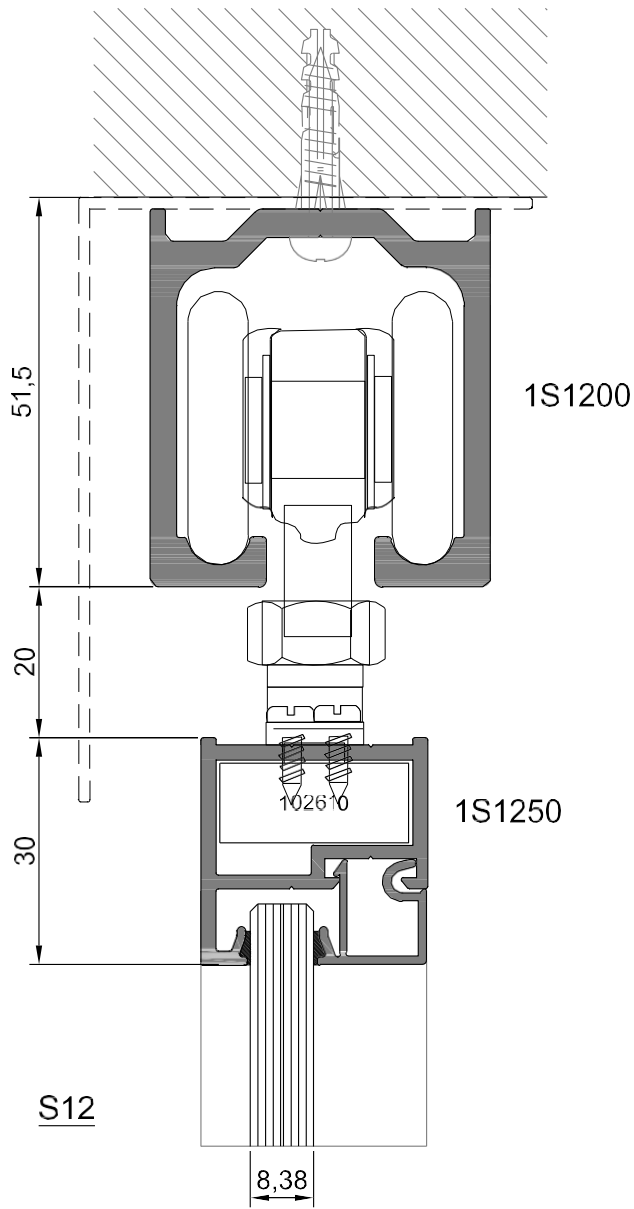
S10



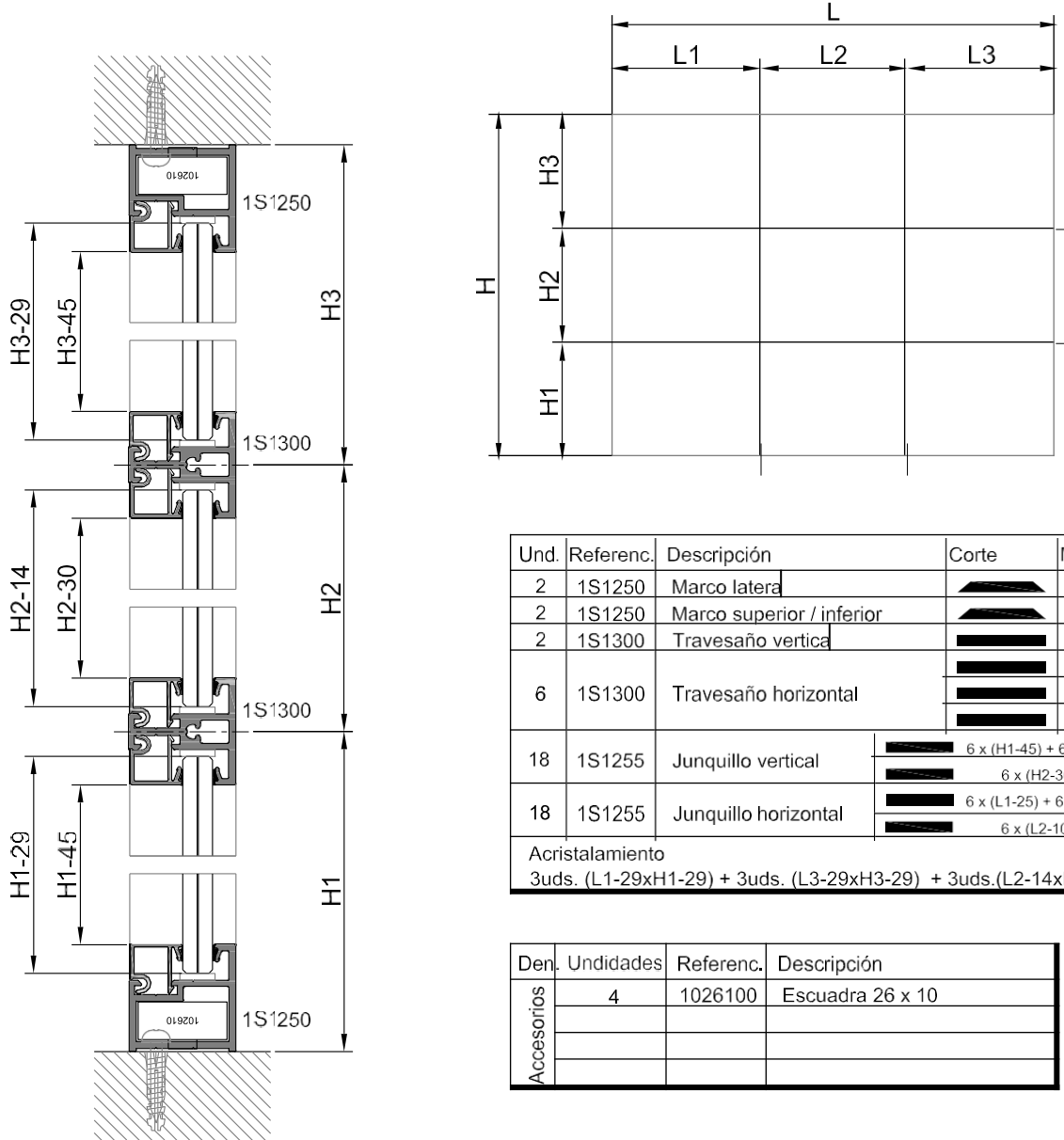
S11





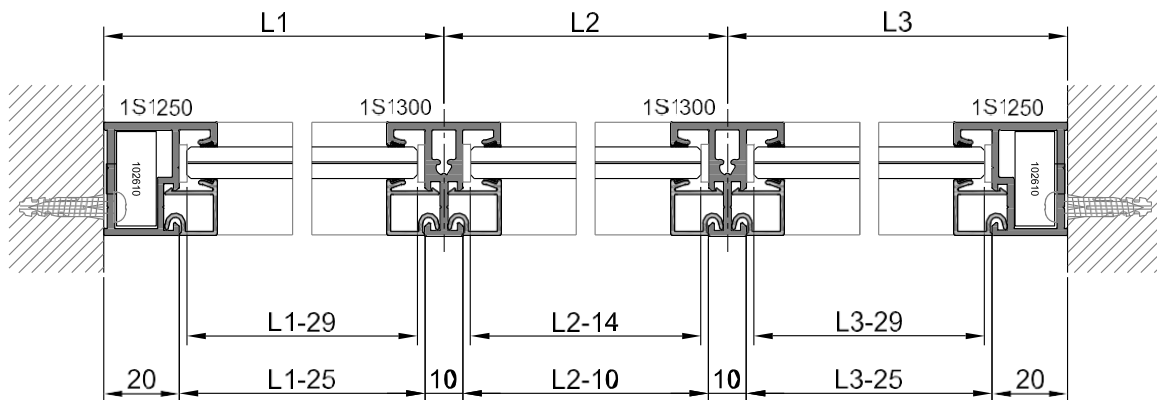


FIJOS

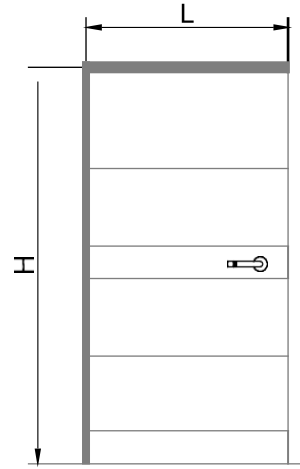
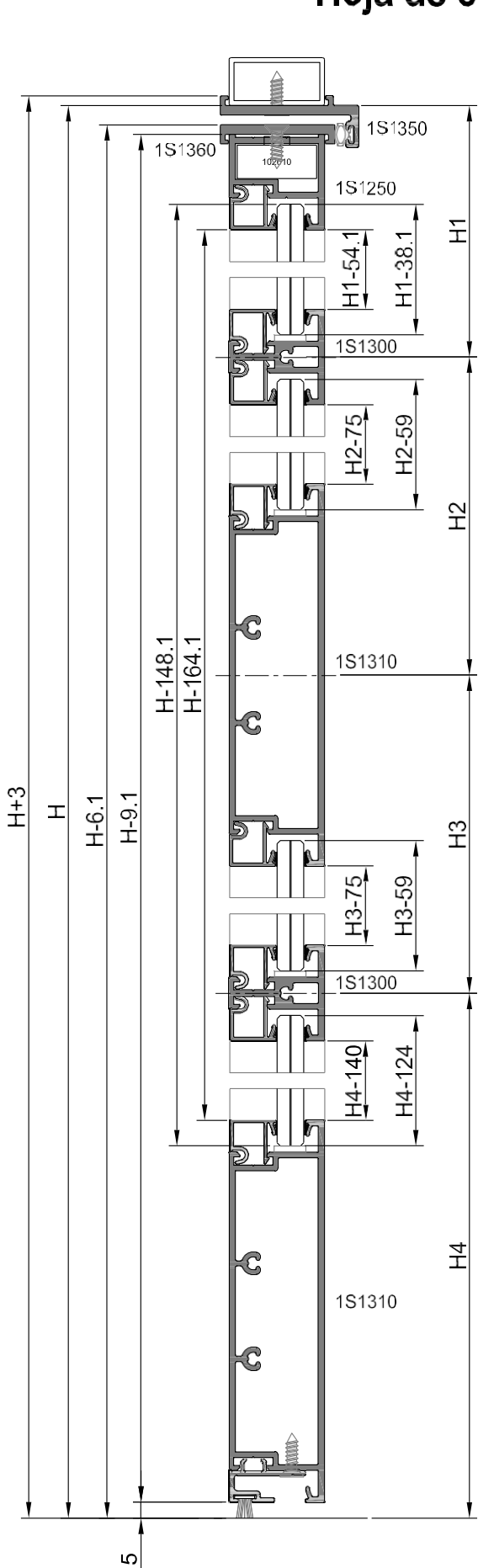


Und.	Referenc.	Descripción	Corte	Medidas
2	1S1250	Marco lateral		H
2	1S1250	Marco superior / inferior		L
2	1S1300	Travesaño vertical		H - 40
6	1S1300	Travesaño horizontal		L1 - 25
				L2 - 10
				L3 - 25
18	1S1255	Junquillo vertical		6 x (H1-45) + 6 x (H3-45)
				6 x (H2-30)
18	1S1255	Junquillo horizontal		6 x (L1-25) + 6 x (L3-25)
				6 x (L2-10)
Acristalamiento				
3uds. (L1-29xH1-29) + 3uds. (L3-29xH3-29) + 3uds.(L2-14xH2-14)				

Den.	Unidades	Referenc.	Descripción
Accesorios	4	1026100	Escuadra 26 x 10



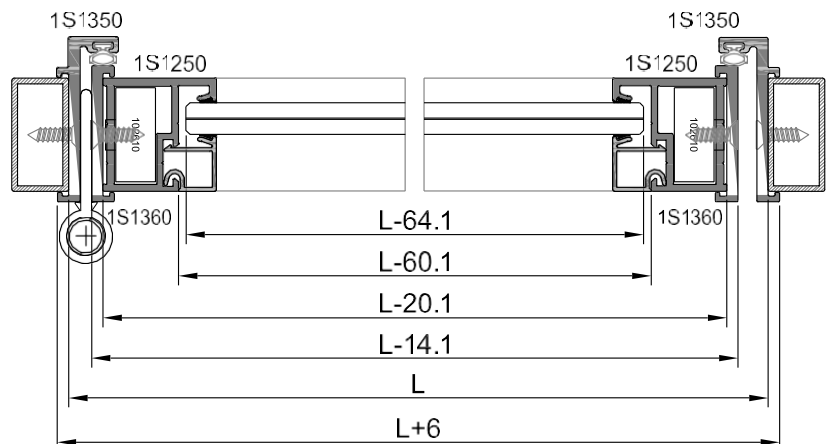
Escala 1:2



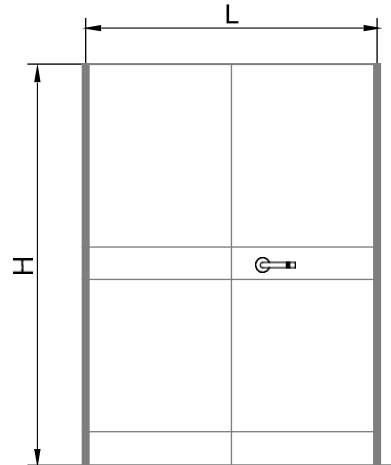
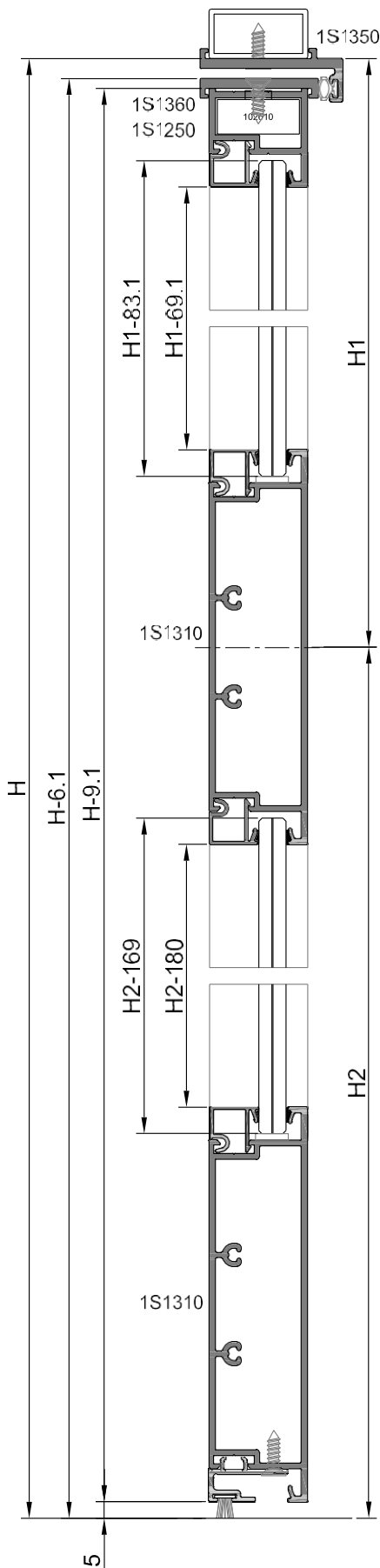
Und.	Referenc	Descripción	Corte	Medidas
1	1S1350	Marco abatible horizontal		L+6
2	1S1350	Marco abatible lateral		H+3
1	1S1360	Embellecedor superior		L-14.1
2	1S1360	Embellecedor lateral		H-6.1
1	1S1250	Hoja horizontal		L-20.1
2	1S1250	Hoja vertical		H-9.1
2	1S1300	Travesaño horizontal 30		L - 60.1
2	1S1310	Travesaño horizontal 120		L - 60.1
8	1S1255	Junquillo horizontal		L - 60.1
1	1S1315	Suplemento zócalo		L - 60.1
	1S1255	Junquillo vertical		2 x (H1-54.1)
	1S1255	Junquillo vertical		2 x (H2-75)
	1S1255	Junquillo vertical		2 x (H3-75)
	1S1255	Junquillo vertical		2 x (H4-140)


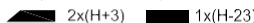









Acristalamiento: 4 Unidades  
 1 ud (L-64.1 x H1-38.1) + 1 ud (L-64.1 x H2-59)  
 1 ud (L-64.1 x H3-59) + 1 ud (L-64.1 x H4-124)

Den.	Unidades	Referenc.	Descripción
Accesorios	2	1026100	Escuadra 26 x 10
	4	0120039	Bisagra
	1	0120038	Cerradura
	1	0120040	Manilla doble redonda
	1	0120041	Cilindro 30-30
	1L+2H	0120043	Junta burbuja
	1L	0106580	Felpa 6,5x8



Escala 1:2

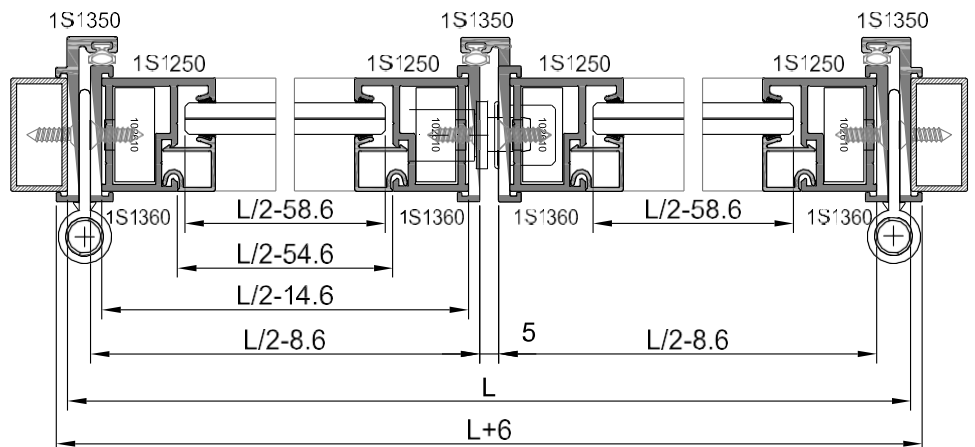


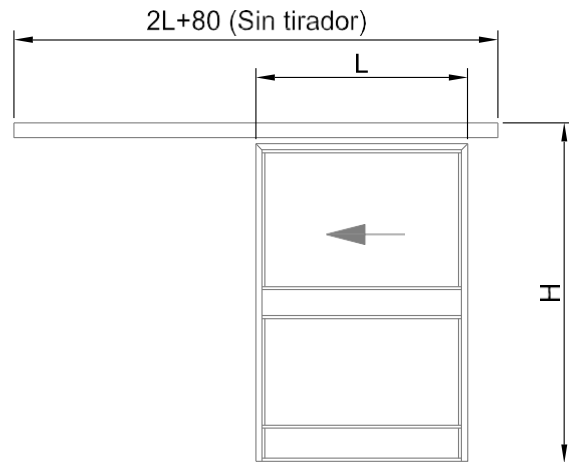
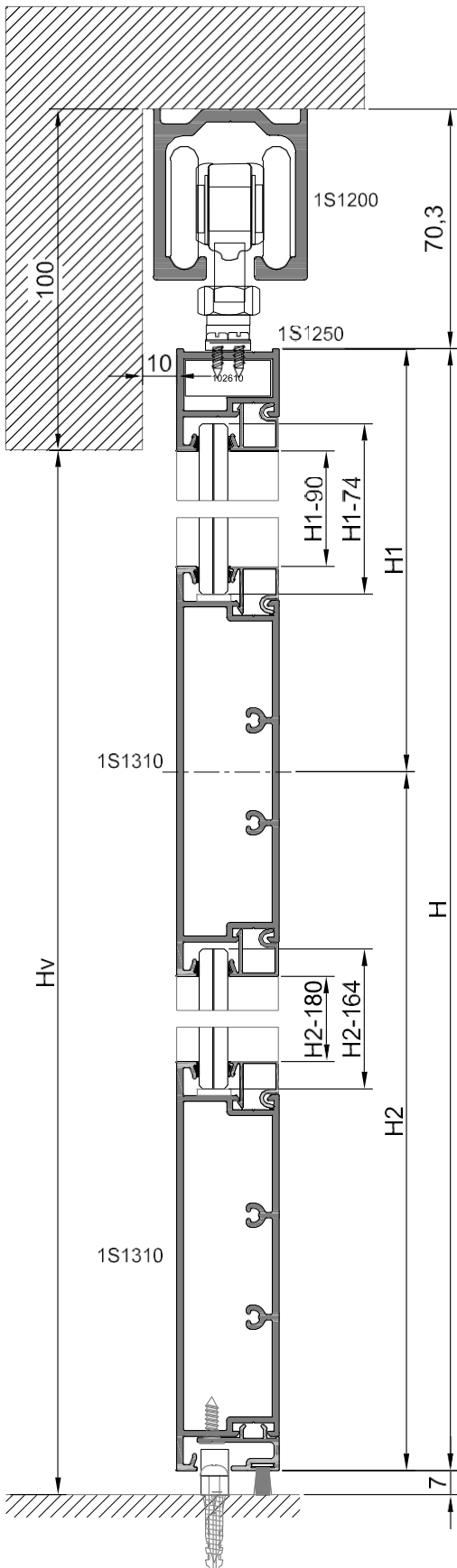
Und.	Referenc.	Descripción	Corte	Medidas
1	1S1350	Marco abatible horizontal		L+6
3	1S1350	Marco abatible lateral		2x(H+3) 1x(H-23)
2	1S1360	Embellecedor superior		L/2-8.6
4	1S1250	Embellecedor lateral		H-6.1
2	1S1250	Hoja horizontal		L/2-14.6
4	1S1360	Hoja vertical		H-9.1
4	1S1310	Travesaño horizontal 120		L/2 - 54.6
8	1S1255	Junquillo horizontal		L/2 - 54.6
2	1S1315	Suplemento zócalo		L/2 - 54.6
	1S1255	Junquillo vertical		4 x (H1-69.1)
	1S1255	Junquillo vertical		4 x (H2-180)

Acristalamiento: 4 Unidades  
2 uds. (L/2-58.6 x H1-83.1)  
2 uds. (L/2-58.6 x H2-169)

Den.	Unidades	Referenc.	Descripción
Accesorios	4	1026100	Escuadra 26 x 10
	8	0120039	Bisagra
	1	0120038	Cerradura
	1	0120040	Manilla doble redonda
	1	0120041	Cilindro 30-30
	1L + 3H	0120043	Junta burbuja
	1L	0106580	Felpa 6,5x8

### Medidas de corte para cerradura 0120038



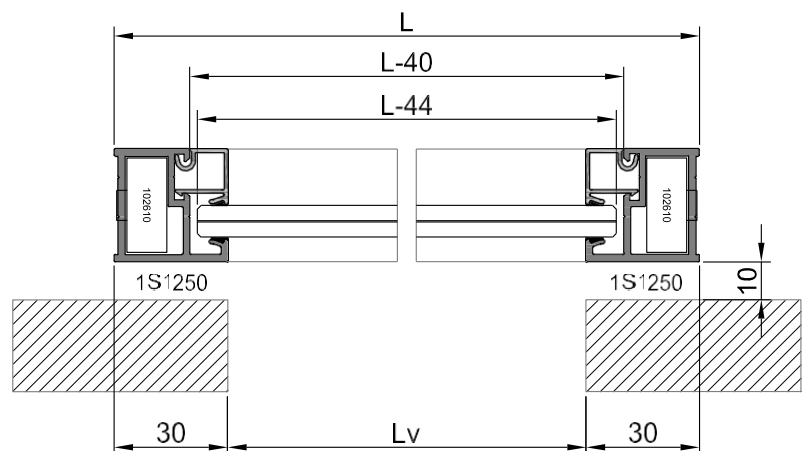


Ancho mínimo  $L \geq 650$  mm / Peso máximo 150 kg x hoja

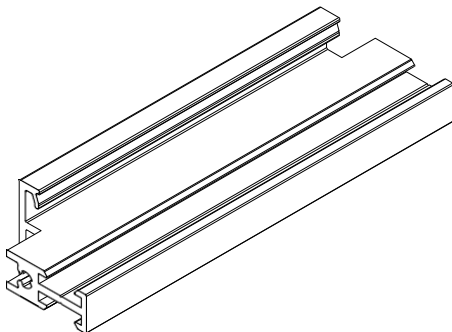
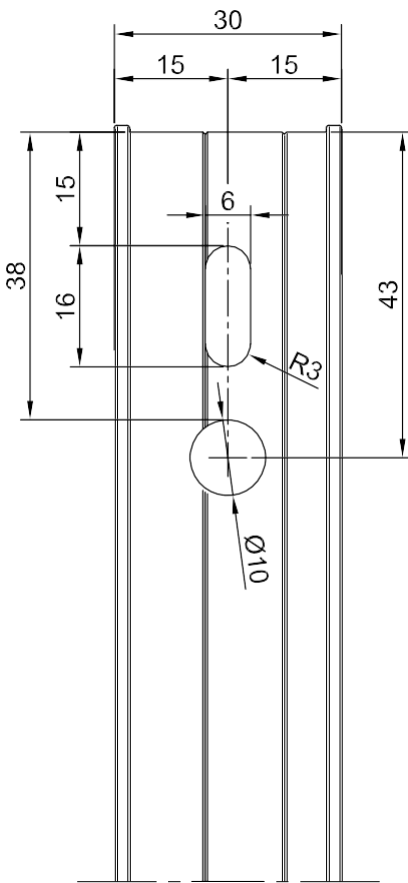
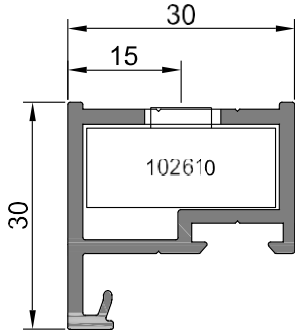
Und.	Referenc.	Descripción	Corte	Medidas
1	1S1200	Guía superior		2L+80
1	1S1250	Hoja horizontal		L
2	1S1250	Hoja vertical		H
2	1S1310	Travesaño horizontal 120		L - 40
2	1S1315	Suplemento zócalo		L - 40
4	1S1255	Junquillo horizontal		L - 40
2	1S1255	Junquillo vertical		H1 - 90
2	1S1255	Junquillo vertical		H2 - 180

Acristalamiento: 2 Unidades  
1 ud (L-44 x H1-74)  
1 ud (L-44 x H2-164)

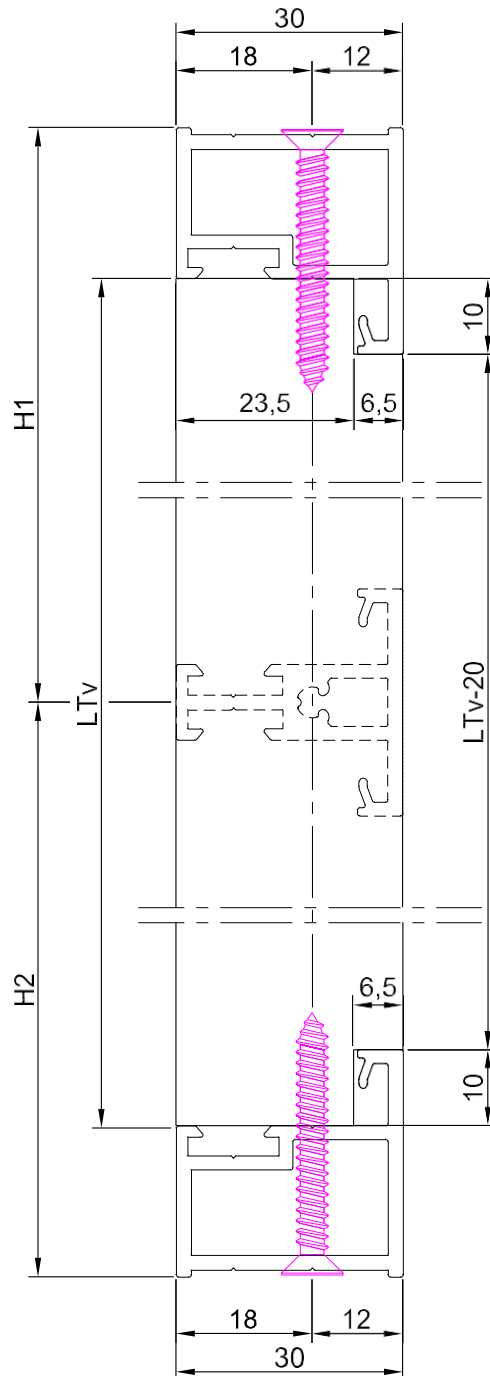
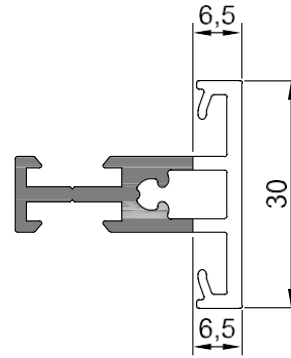
Den.	Unidades	Referenc.	Descripción
Accesorios	2	1026100	Escuadra 26 x 10
	1	0120042	Cjto. corredera 1 hoja 150 kg
	1L		Felpa 6,5x10



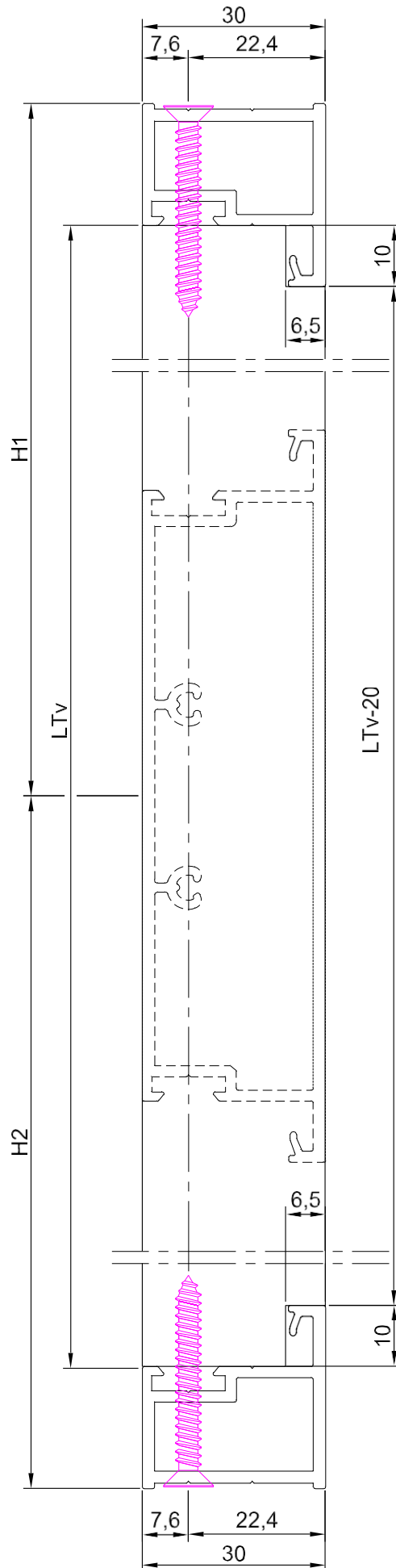
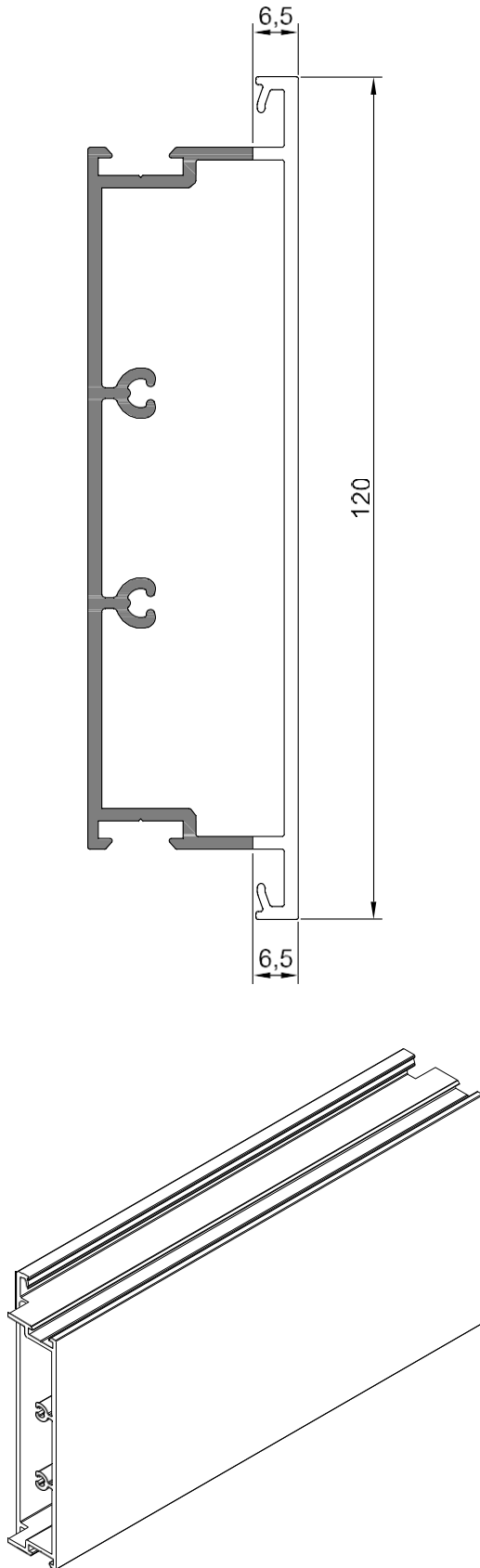
Mecanizado perfil 1S1250



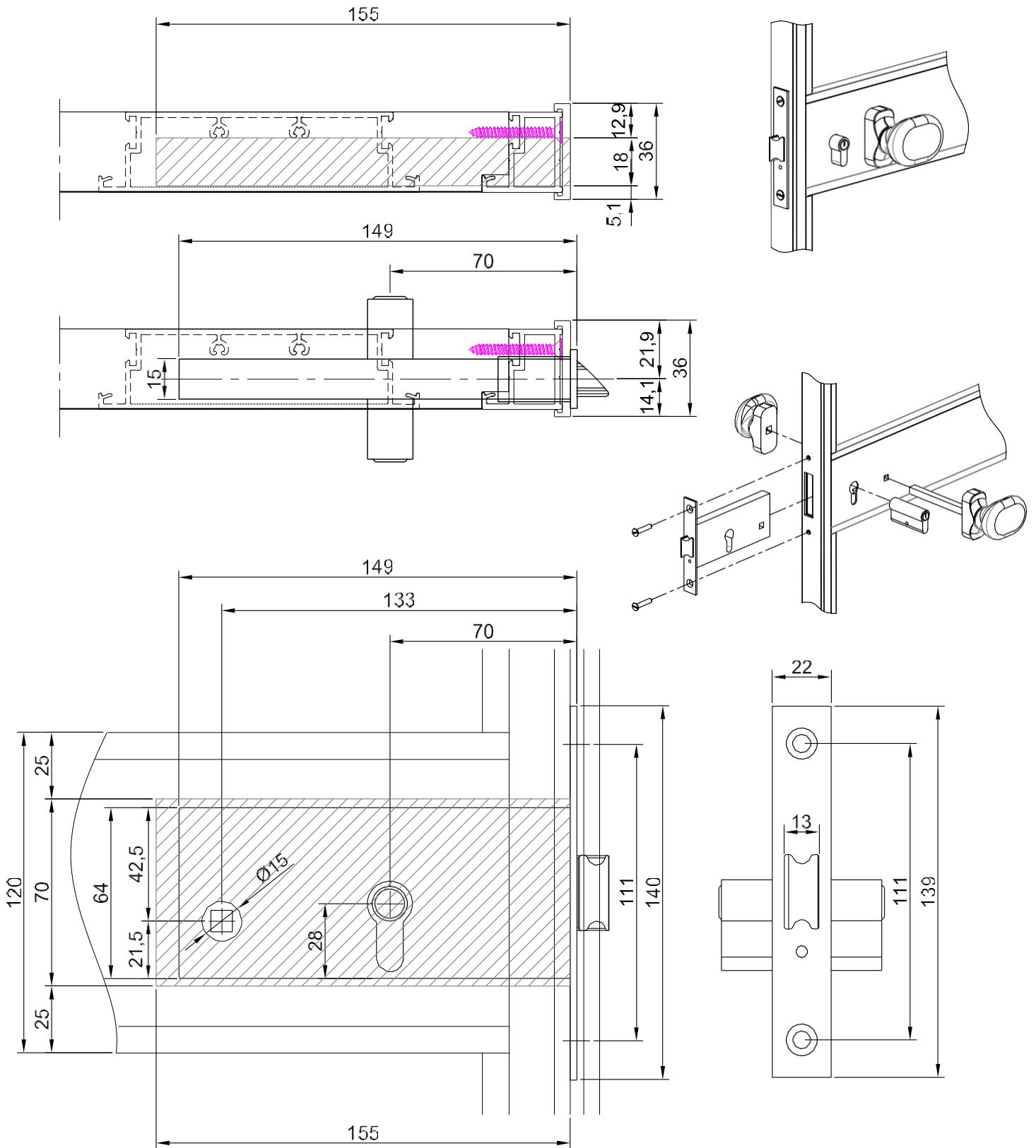
Fresado colocación 1S1300



Fresado colocación 1S1310



Mecanizado para cerradura 0120038



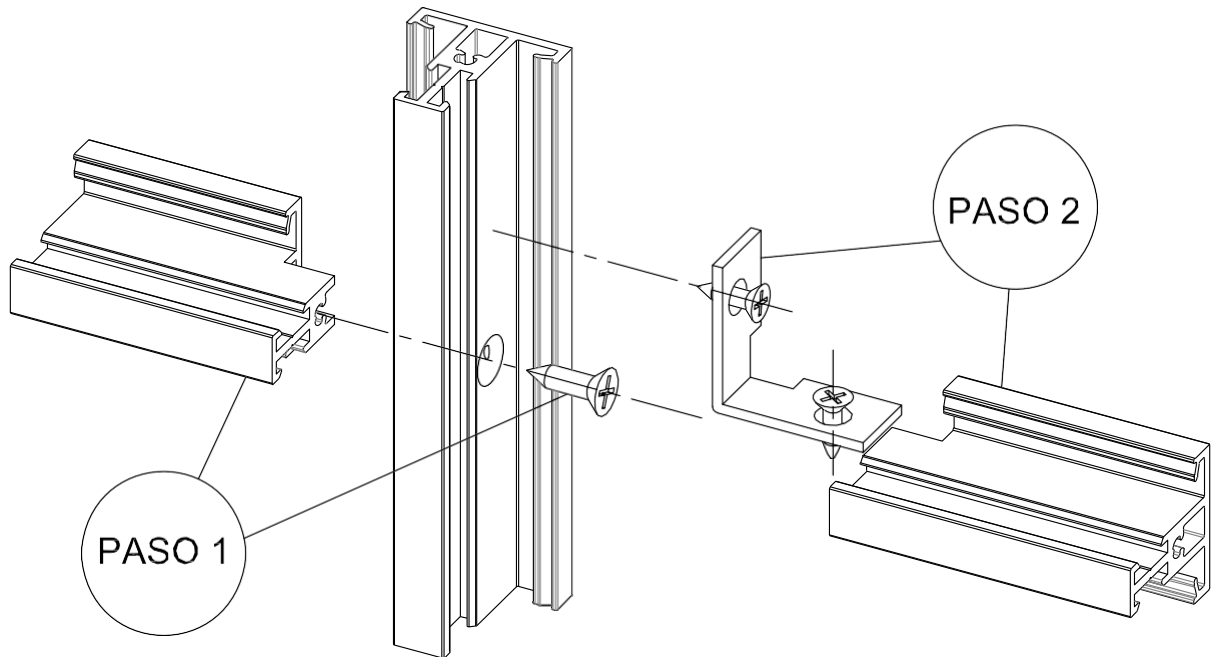
Escala 1:2



Recomendaciones para la fijación de travesaños intermedios con pieza de unión.

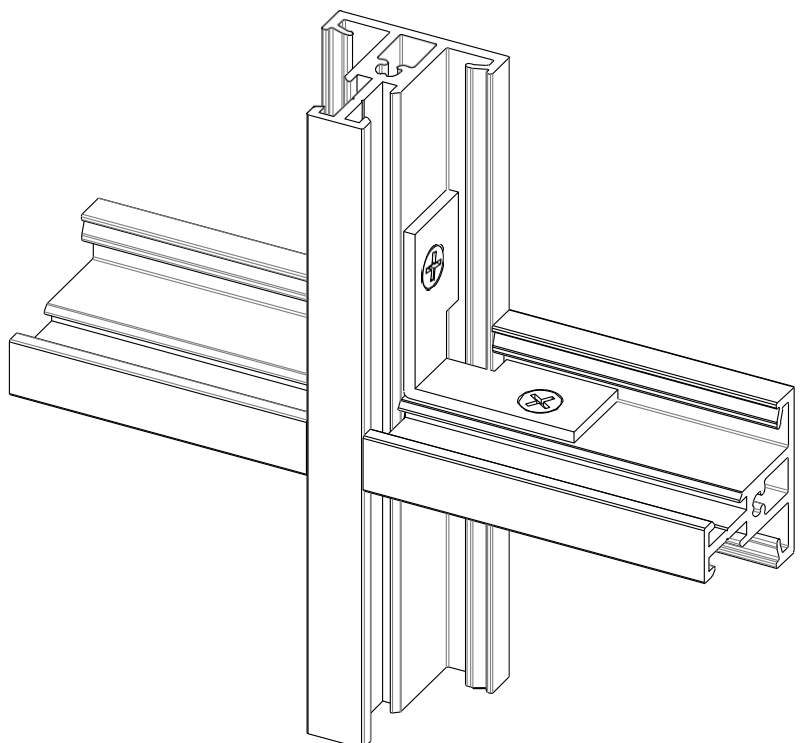
## PASO 1

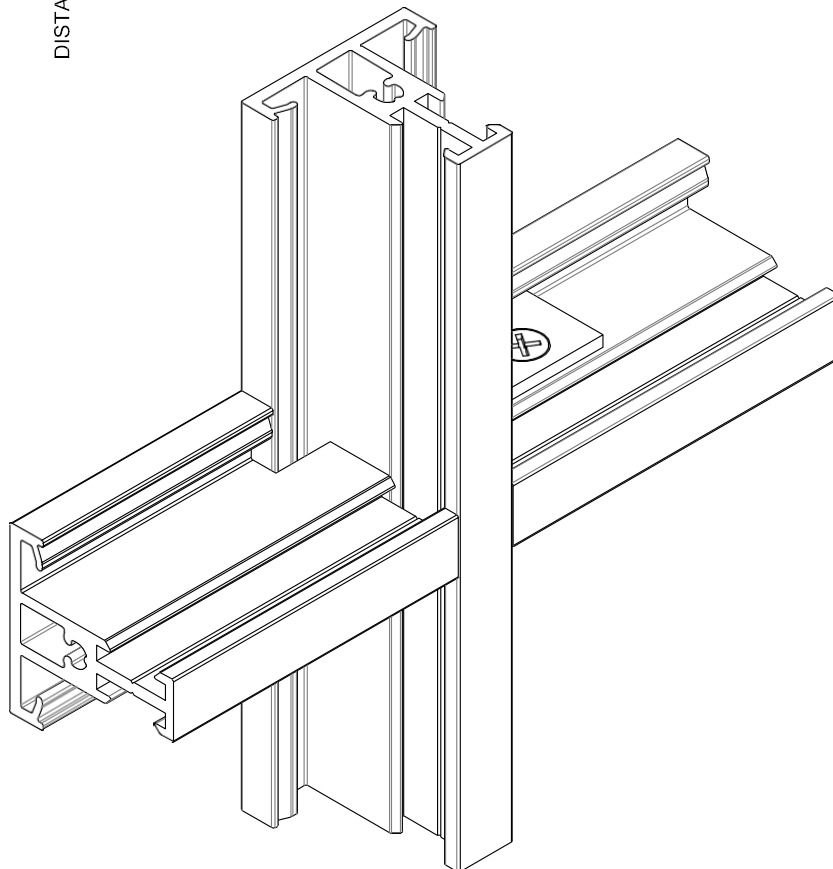
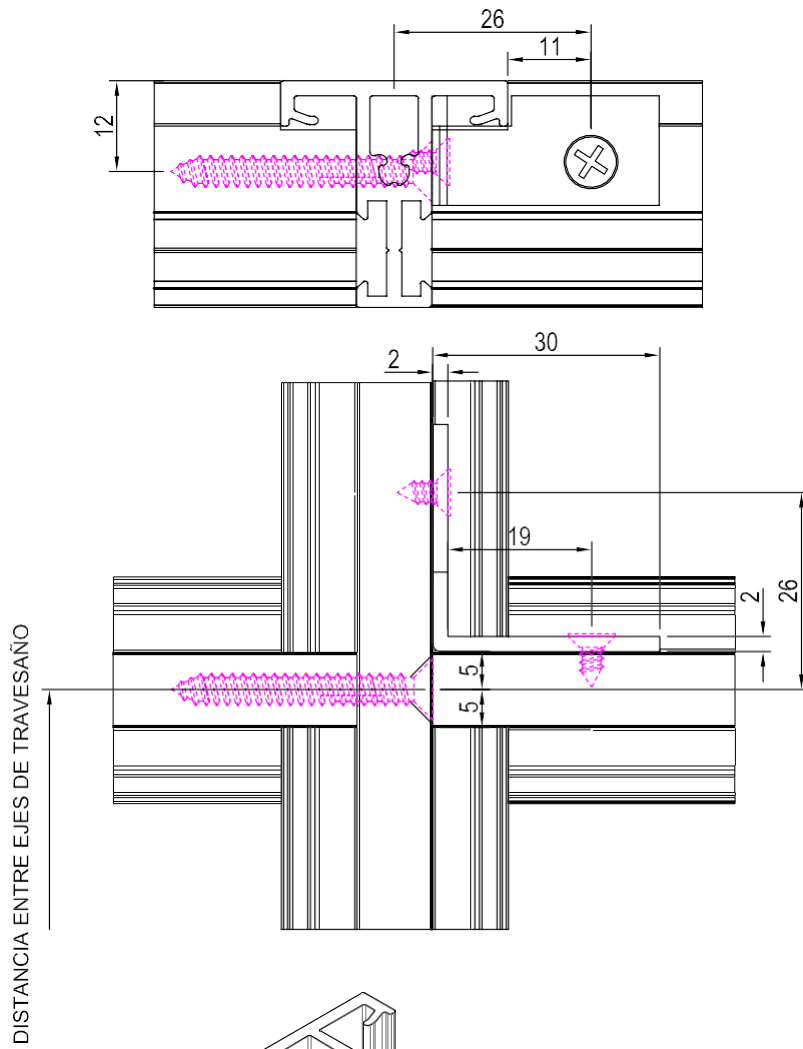
Colocamos travesaño horizontal a su altura según diseño y fijamos con tornillo autotaladrante M4.2x32mm (DIN 7504-P HP Z)



## PASO 2

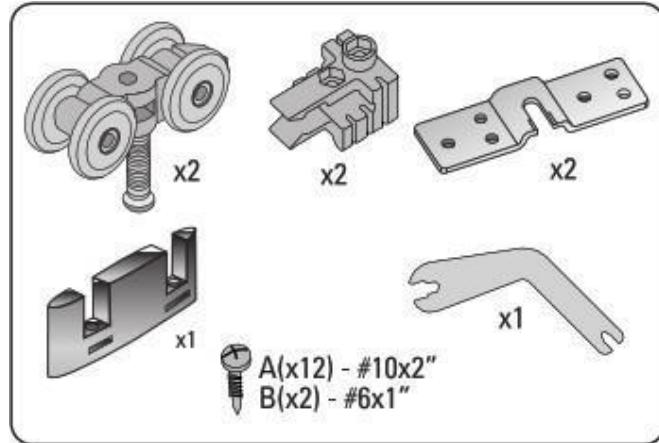
Colocación travesaño horizontal mediante escuadra de union, fijamos con tronillos autoroscante de M3.5x13 (DIN 7504-P HP Z) y cortamos la parte que sobresale.



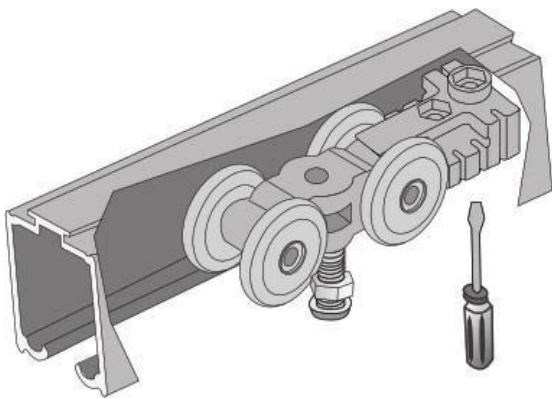


Recomendaciones para colocación de herraje 0120042

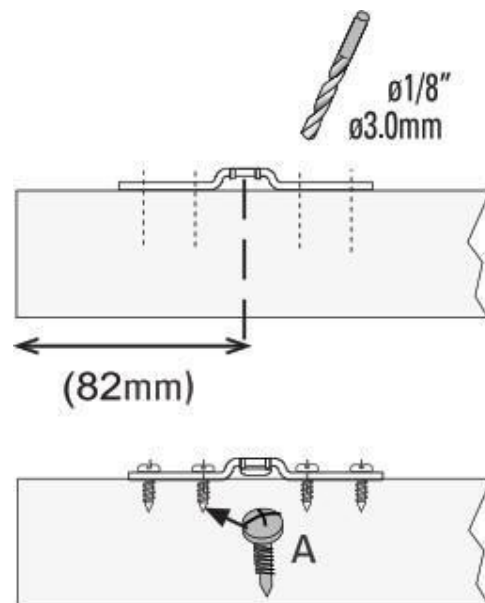
Ancho mínimo 650 mm  
Peso máximo 150 kg x hoja



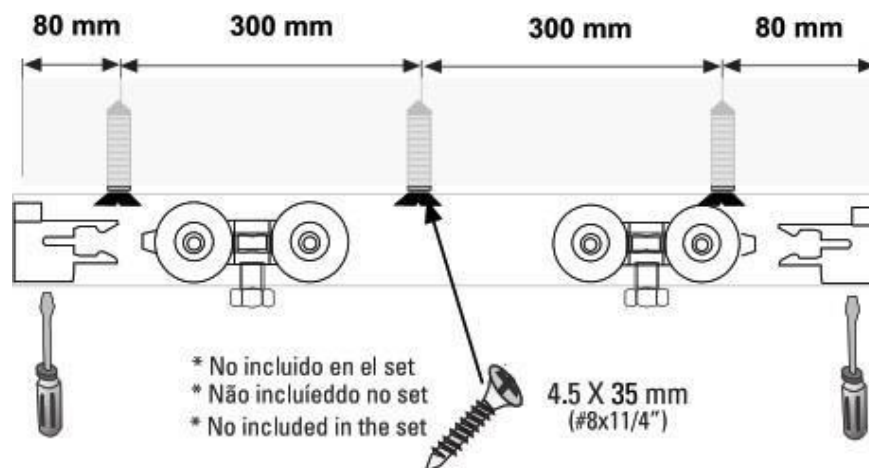
### PASO 1



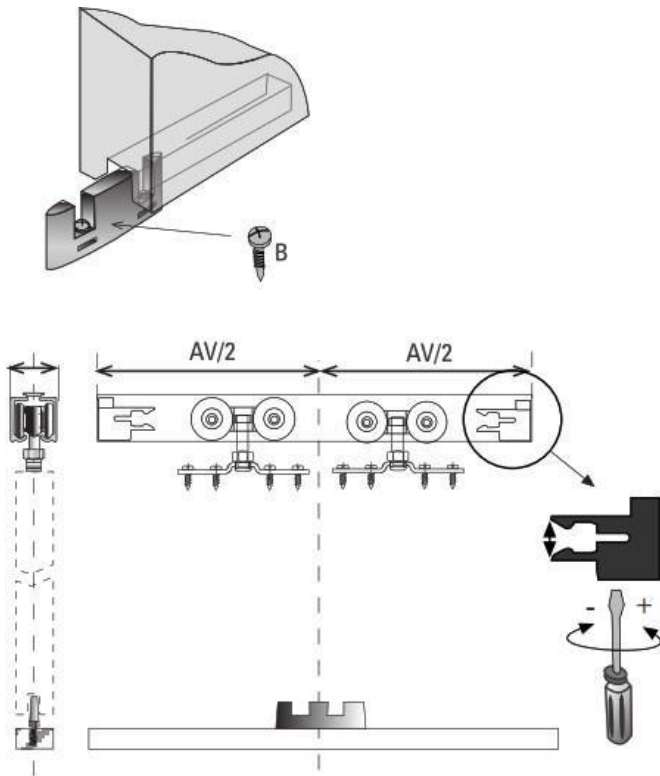
### PASO 2



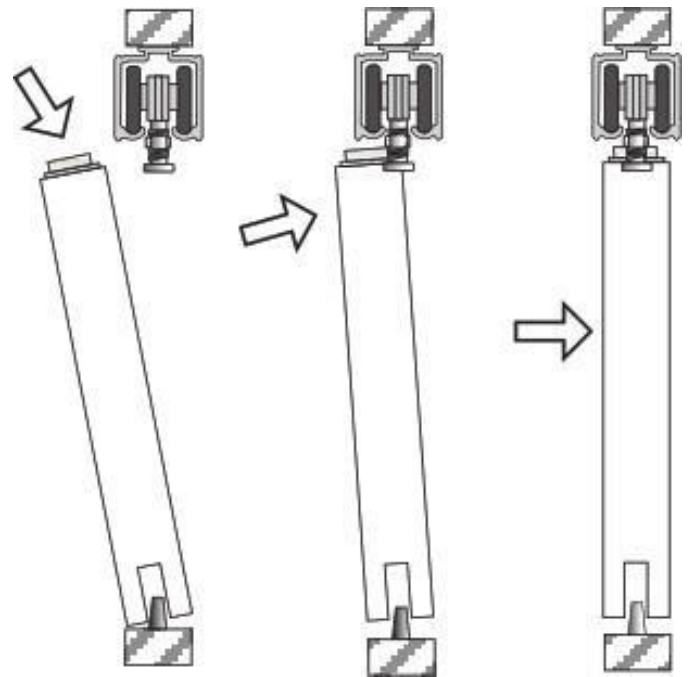
### PASO 3



## PASO 4



## PASO 5



## PASO 6

